

2023 Annual Report



Sirius College was first established in 1997 with only 28 students in Broadmeadows, Victoria. Sirius College is a non-denominational school which welcomes students from all backgrounds, regardless of race, colour, belief, culture or gender and caters for students from more than 70 different ethnic and religious backgrounds.

Since its first operation, Sirius College has grown beyond expectations to meet the tremendous demand of the community and has managed to reach about 3300 student enrolments across 6 campuses in 2023. This was made possible by the support of the community and their abiding concern and generosity.

Sirius College is proud of its reputation as having the highest university offers in the North Western suburbs, remarkably, since its first graduates.

In January 2013, the school name was changed from 'ISIK College' to 'Sirius College' to better reflect the diverse communities it represents. Sirius is the brightest star in the night sky.

Sirius College is not only an academic school but dedicated to raising individuals with multiple skills in different areas such as sport, music and performing arts.

Today, Sirius College plays a leading role in educating young generations with its academic excellence and disciplined education; and continues to contribute to the future of Australia.



OUR MISSION

To raise competent individuals through values-based education with academic excellence.

OUR VISION

To nurture resilient and skilled leaders for tomorrow.

OUR VALUES

- Respect
- Responsibility
- Empathy
- Resilience
- Inquiry



OUR HISTORY

The previous Governing Authority of Sirius College, the Selimiye Foundation Pty Ltd. was established in 1995, and acquired Eastmeadows Primary School, and established an Independent School named ISIK College.

Eastmeadows Campus commenced its operation in 1997 and offers a Prep to Year 12 education program. Eastmeadows Campus is currently sectioned as Primary (Co-ed) and Secondary (Girls only).

Meadow Fair Campus commenced its operation in 2005 as Upfield Campus and was relocated to its current site in mid 2010. It offers a year 7- Year 12 educational program. (Boys Only).

Keysborough Campus commenced its operation in 2001 and offers a co-educational program for years Foundation-Year 12.

Shepparton Campus commenced its operation in 2005 and offers a co-educational program for years Foundation-Grade 6.

Ibrahim Dellal Campus in Sunshine commenced its operation in 2010 and offers a co-educational program for years Foundation-Year 12.

Dallas Campus commenced its operation in 2015 and accommodates Grade 5's and Grade 6's only.

The number of enrolments at SIRIUS College has increased from 28 students in 1997 to about 3300 students across all campuses in 2023.

The Governing Authority of Sirius College has been changed to Sirius College Ltd. in 2016.

CHILD SAFETY STATEMENT

Sirius College is committed to providing environments where our students are safe and feel safe, where their participation is valued, their views respected, and their voices are heard about decisions that affect their lives.

The College has no tolerance for child abuse and is committed to acting in children's best interests, promoting student safety and wellbeing and protecting children and students from child abuse. The College has established strategies, practices, policies and procedures to protect children and students from child abuse and harm.

The College promotes positive relationships between students and adults and between students and their peers. These relationships are based on trust and respect.

The College takes proactive steps to identify and manage any risk of harm to students in the School Environment and School Boarding Environment. The College actively works to listen to and empower children. When child safety concerns are raised or identified, the College treats these seriously and responds promptly, thoroughly and consistently in line with the College's policies and procedures.

Child safety is a shared responsibility. Every person has an important role in promoting child safety and wellbeing and promptly raising any issues or concerns about a child's safety.

The College is committed to regularly reviewing our child-safe practices and seeking input from our students, families, staff, and volunteers to inform its ongoing child safety strategies.



VALUE ADDED

CURRICULUM FRAMEWORK UPDATE

The College has aligned its curriculum with emerging educational trends, including blended and personalised learning, and the newly refined Australian Curriculum. Key updates include a transition to five one-hour periods per day, fostering in-depth subject exploration and flexible lesson adaptation. Primary school students will benefit from a new integrated Science and Technology program and dedicated Humanities subjects, alongside the introduction of Performing Arts and Creative Arts to enhance creativity. An enrichment program for years 5 and 6 will further develop essential skills. In secondary school, workload management will be improved by reducing simultaneous subjects and updating elective structures, particularly in years 9 and 10, allowing earlier VCE subject selection. From years 7 to 12, students will experience greater flexibility of choice, enabling them to tailor their education to their interests and future pathways. Extended recess and lunchtime, and shorter Wednesdays, aim to reduce burnout and improve academic performance. These changes are accompanied by dedicated professional development time for teaching staff.

VALUES BASED EDUCATION IMPLEMENTATION PROGRESS

Sirius College continued its implementation of values based education with a focus on establishing a connection between school values and its behaviour management model as well as developing visual elements to guide student understanding of values. Various trainings and meetings have been conducted with staff to better embed values into teaching practices and develop the comprehension and implementation of values by staff members. There have also been some preparations made to bring values to the forefront of school's various initiatives and programs to ensure school values are recognised and upheld with each school initiative such as camps.

CHILDREN UNIVERSITY Keysborough Campus

Sirius College Keysborough is in its second year of running the Children's University program. This year expanding it to years 3-6. The Children's University Swinburne is a fantastic program that celebrates and encourages child-led learning beyond the classroom. By partnering with Learning Destinations and schools, CU have been able to offer a diverse range of fun, high-quality educational experiences to our members in years 4-6. Achievements are recorded in students passports and milestones celebrated at an annual graduation ceremony. All Children's University Swinburne members are issued a Passport to Learning. In their passports, students collect stamps from different Learning Destinations they have visited and record their learning activities (available online, hands on or through the CU Club). Once members have accumulated a minimum of 30 hours of learning, they will graduate just like grown-ups do!

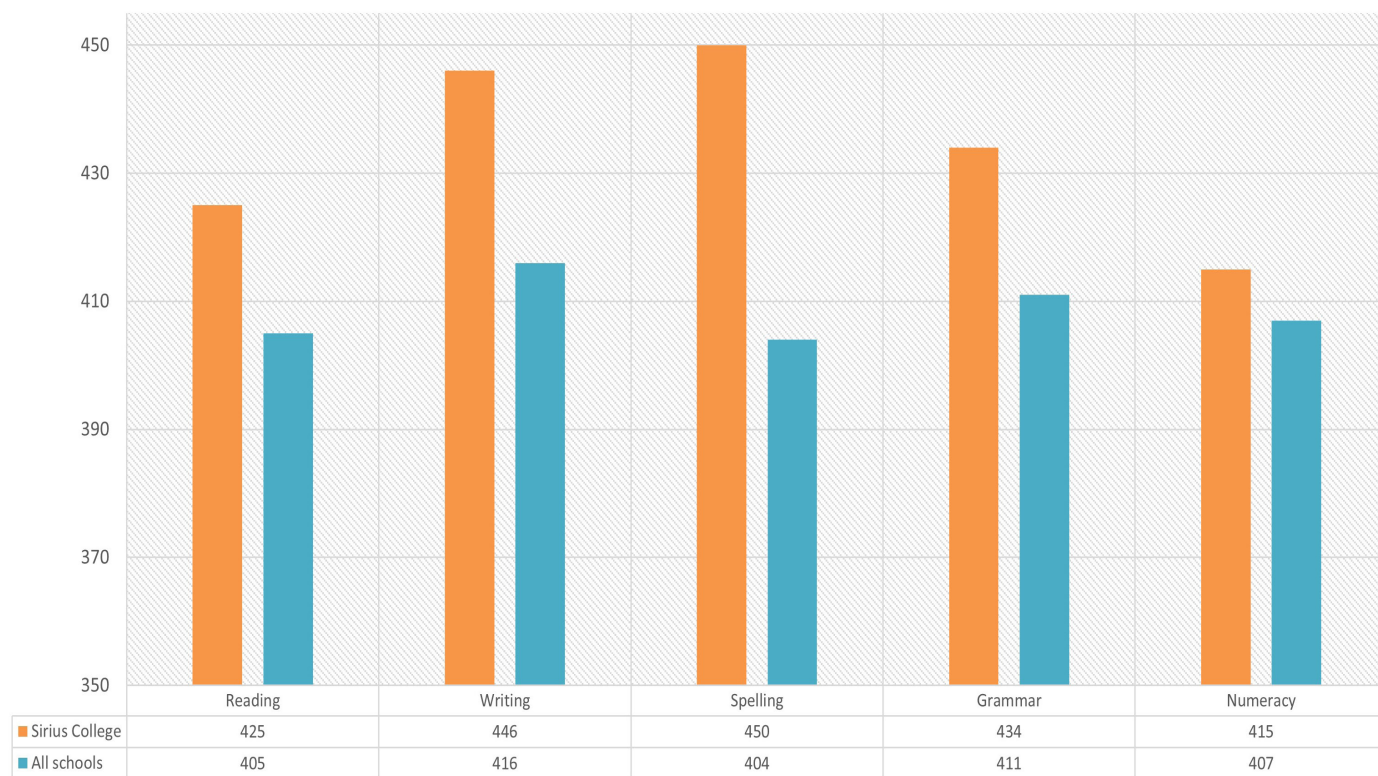


NAPLAN SCORES

Analysis based on year level

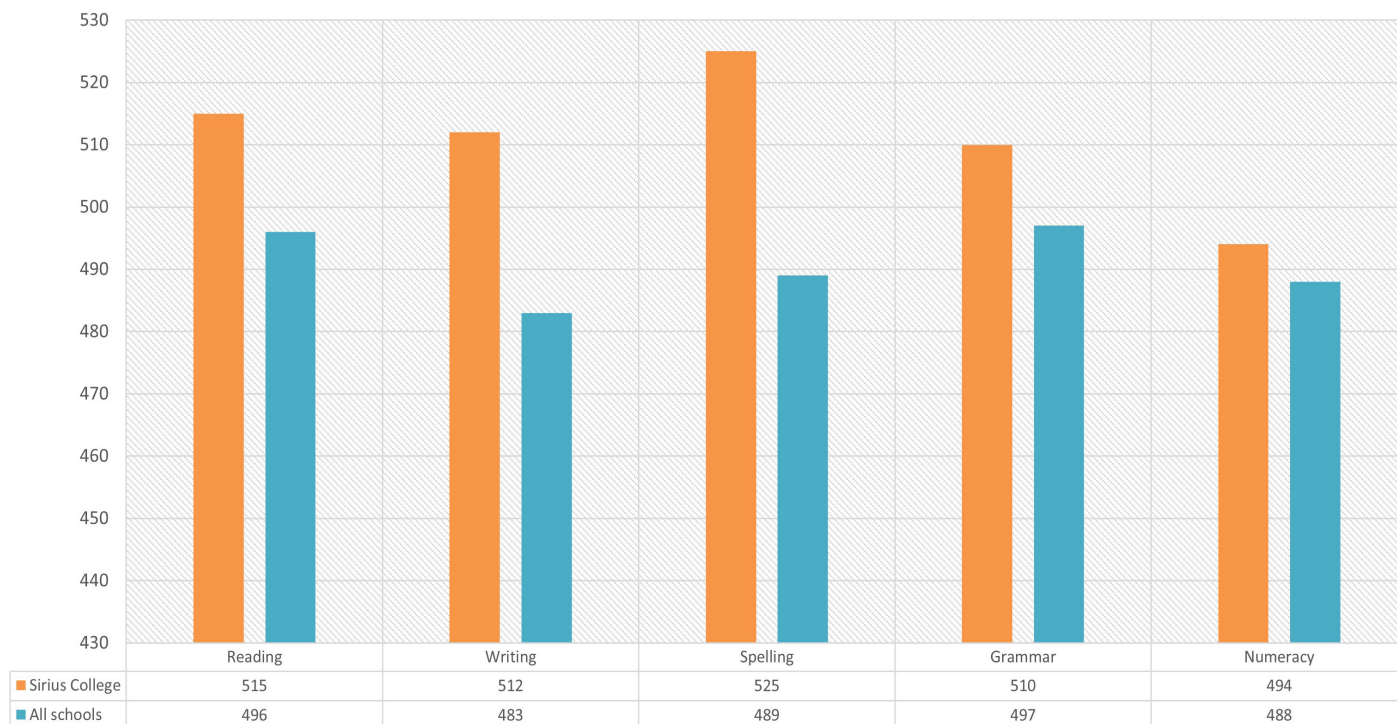
Sirius College average in all areas is well above the national average in this year level.

2023 NAPLAN SCORES - GRADE 3



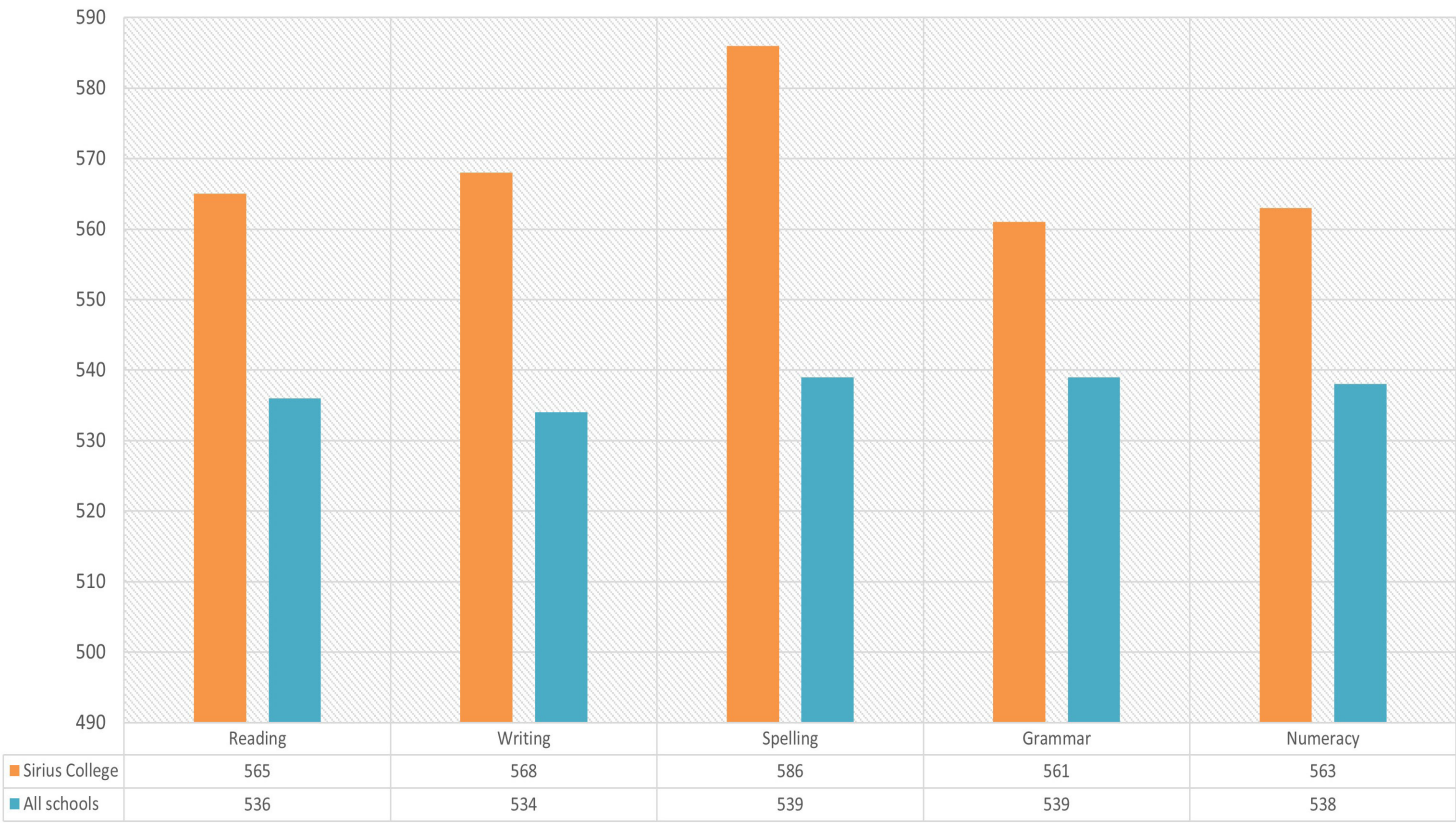
Sirius College average in all areas are well above the national average in this year level.

2023 NAPLAN SCORES - GRADE 5



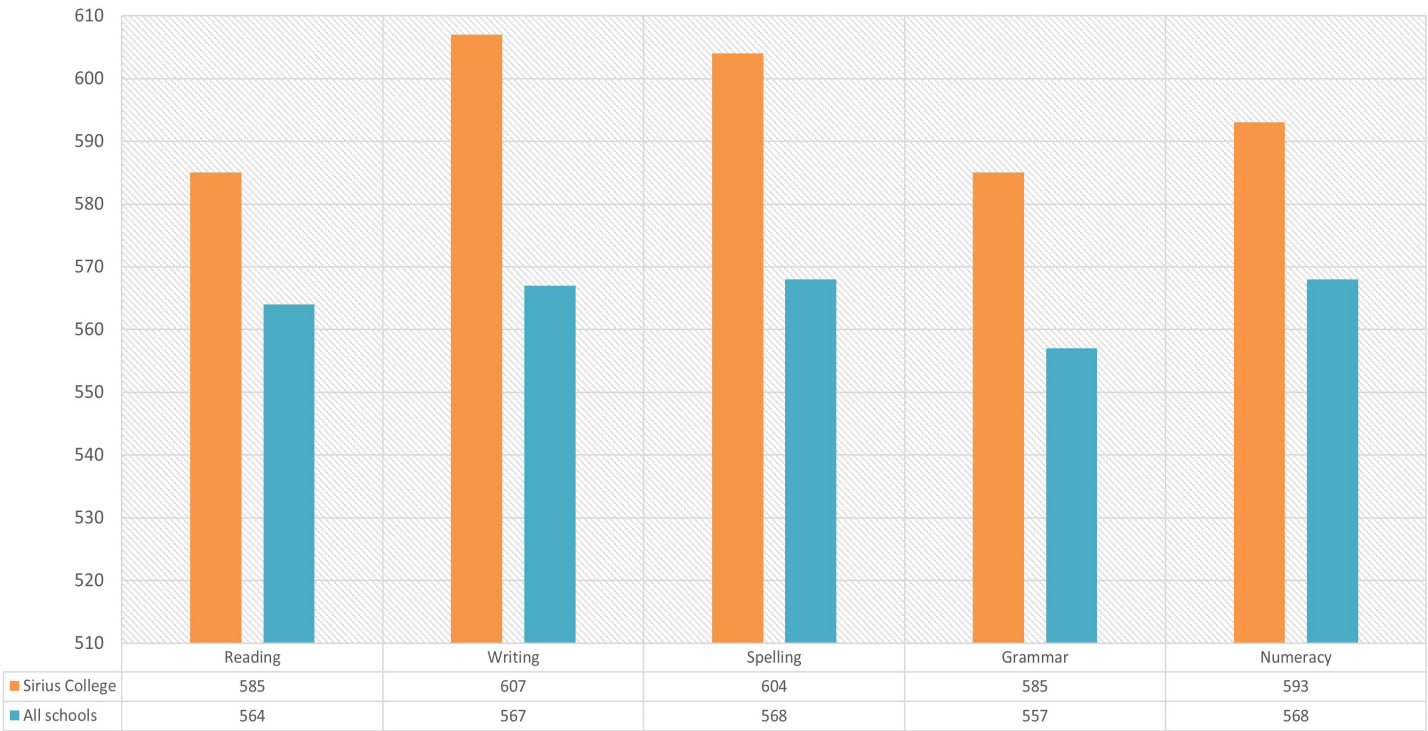
Sirius College average in all areas is well above the national average in this year level.

2023 NAPLAN SCORES - YEAR 7



Sirius College average in all areas are well above the national average in this year level.

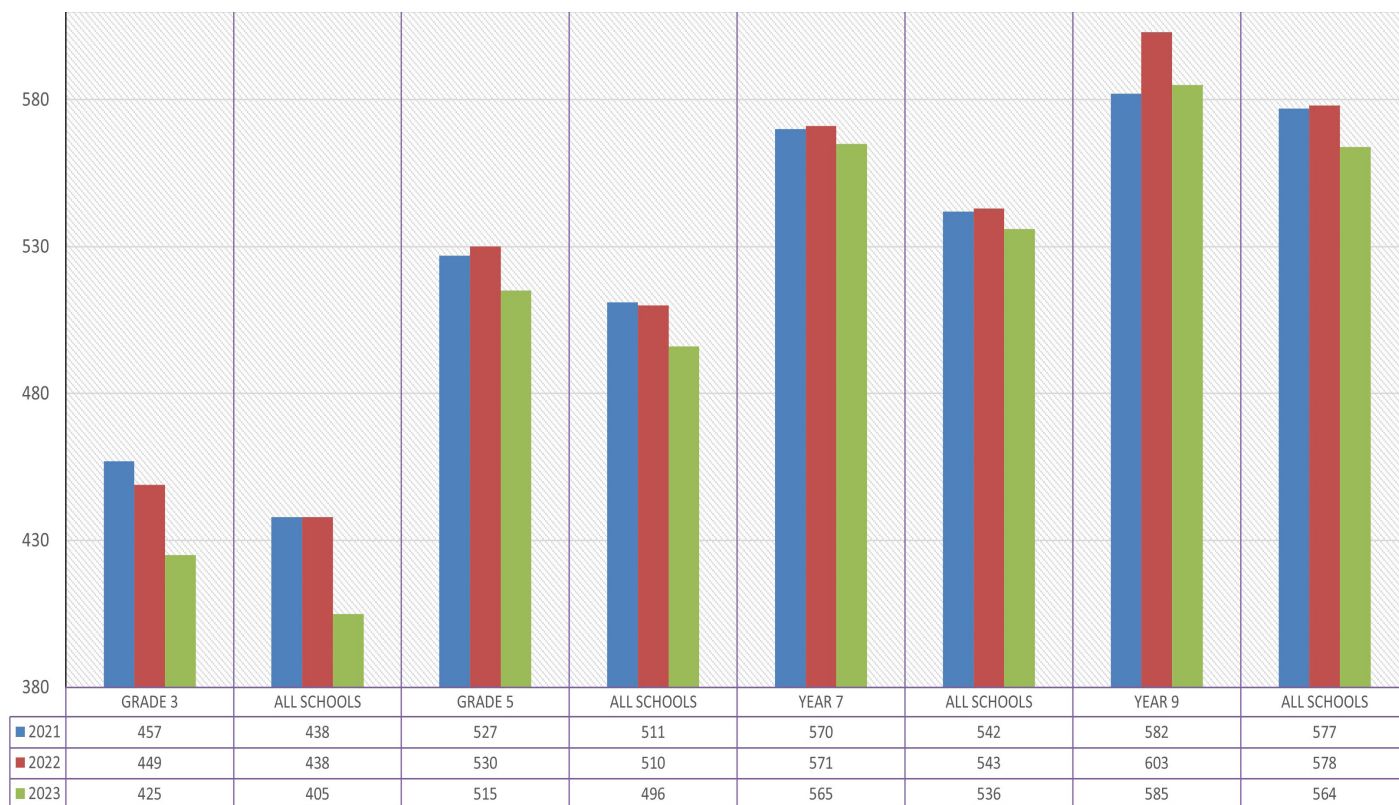
2023 NAPLAN SCORES - YEAR 9



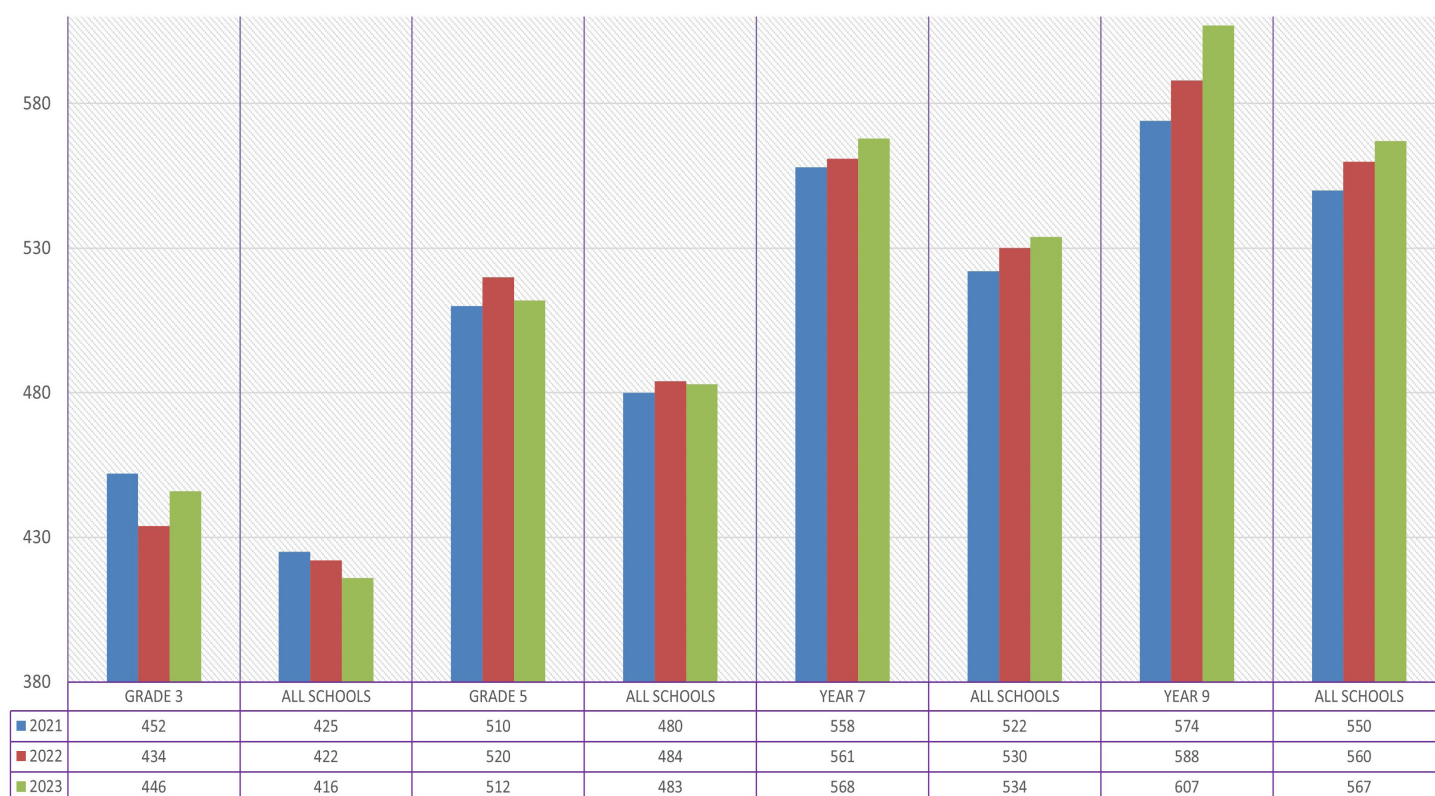
NAPLAN SCORES

Analysis based on subjects

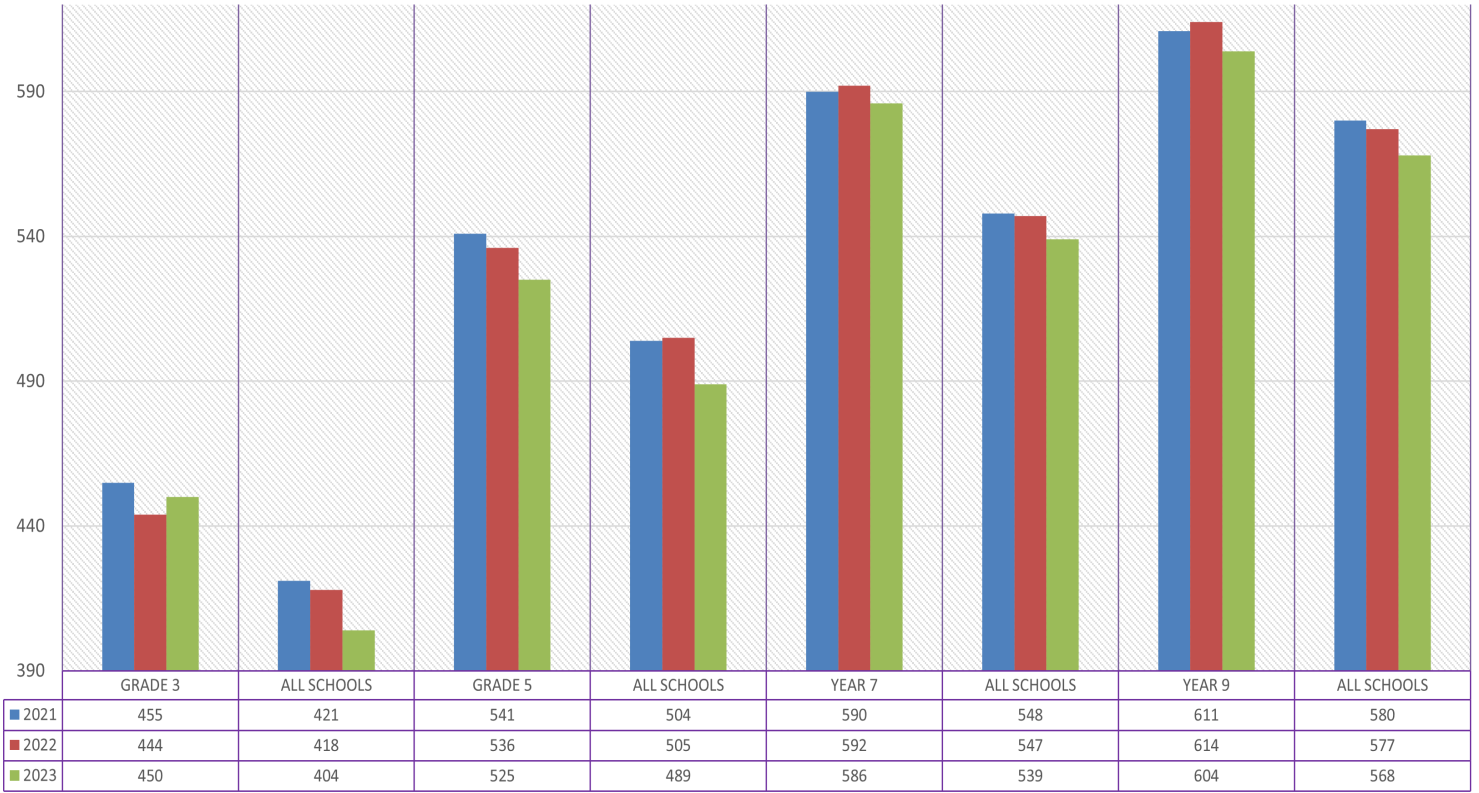
READING



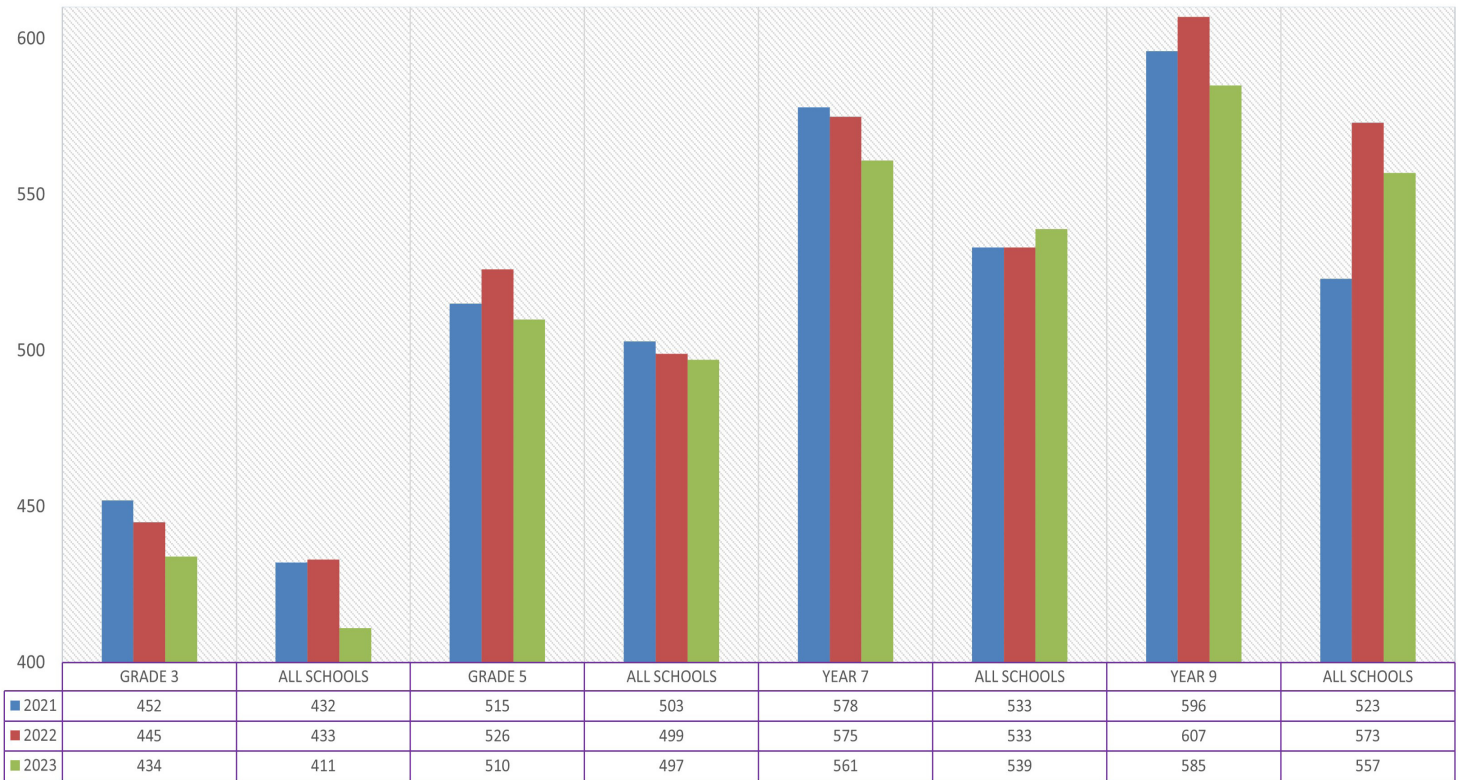
PERSUASIVE WRITING



SPELLING



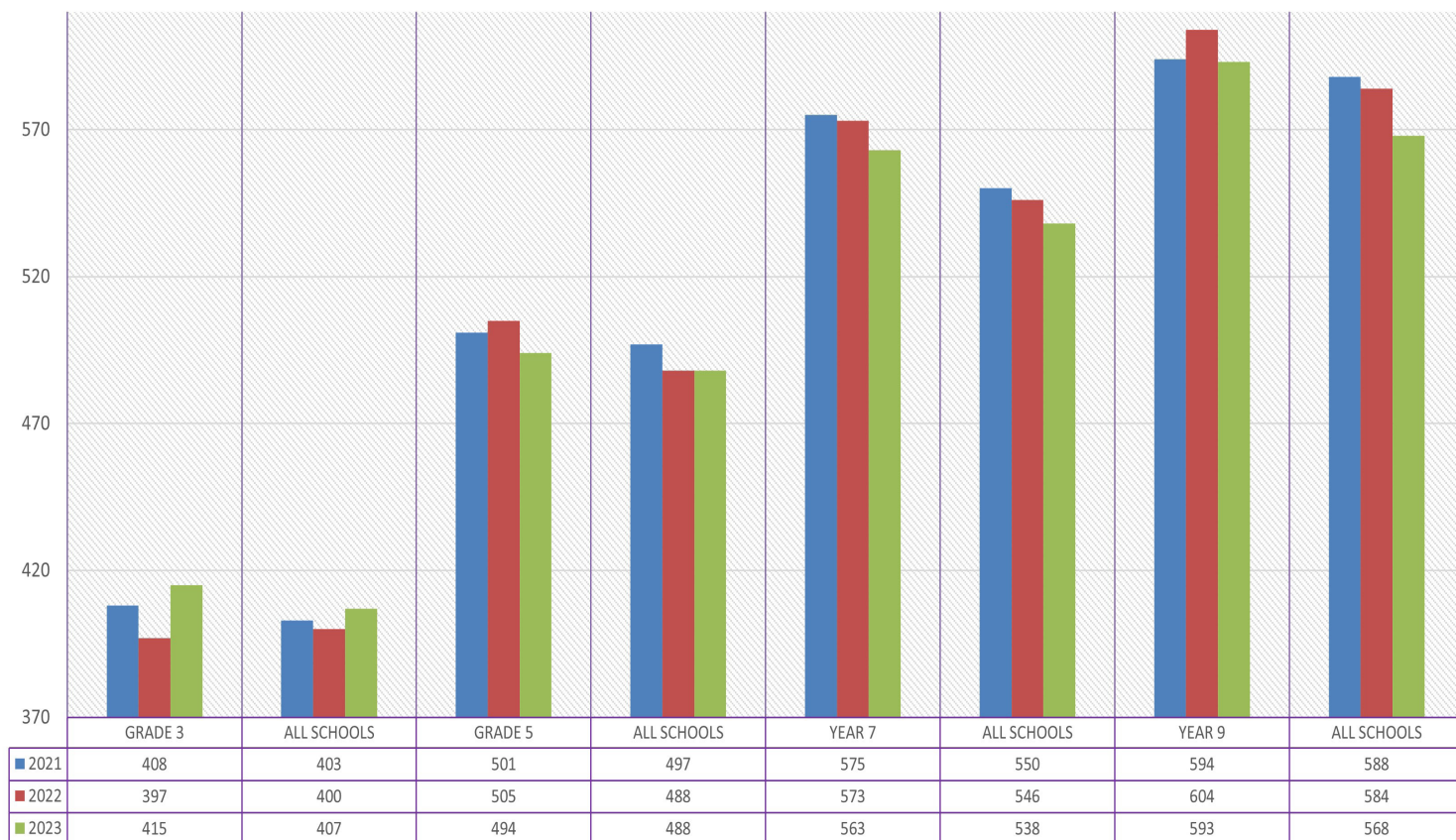
GRAMMAR & PUNCTUATION



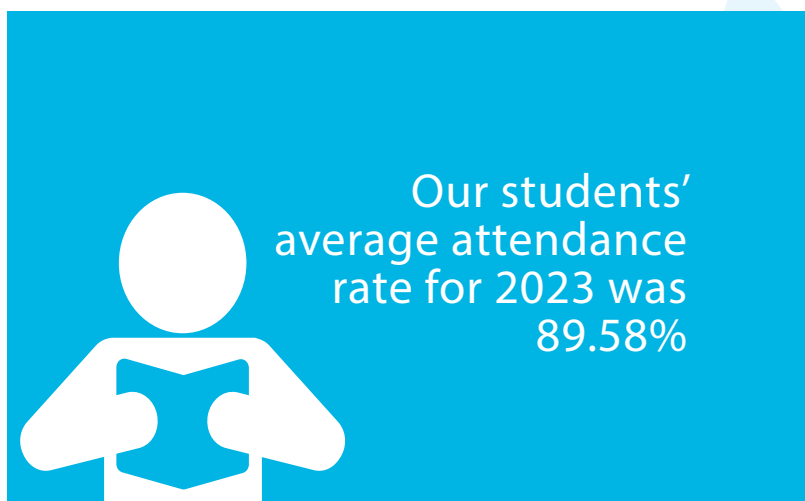
NAPLAN SCORES

Analysis based on subjects

NUMERACY



STUDENT ATTENDANCE



Student attendance by campus:

DALLAS	90.00%
EASTMEADOWS	88.64%
IBRAHIM DELLAL SUNSHINE	91.15%
KEYSBOROUGH	90.10%
MEADOW FAIR	90.40%
SHEPPARTON	87.19%

CAMPUS BREAKDOWN

Eastmeadows

YEAR 7	89.58%
YEAR 8	86.92%
YEAR 9	86.16%
YEAR 10	86.12%
YEAR 11	88.27%
YEAR 12	86.98%

Dallas

FOUNDATION	89.47%
GRADE 1	90.18%
GRADE 2	91.17%
GRADE 3	89.97%
GRADE 4	90.40%
GRADE 5	88.66%
GRADE 6	90.24%

Meadow Fair

YEAR 7	89.96%
YEAR 8	89.20%
YEAR 9	88.21%
YEAR 10	88.28%
YEAR 11	89.91%
YEAR 12	89.19%



CAMPUS BREAKDOWN

Keysborough

YEAR 7	88.69%
YEAR 8	87.91%
YEAR 9	88.07%
YEAR 10	88.22%
YEAR 11	92.17%
YEAR 12	90.40%

Ibrahim Dellal Sunshine

YEAR 7	92.93%
YEAR 8	90.30%
YEAR 9	89.25%
YEAR 10	89.59%
YEAR 11	92.04%
YEAR 12	90.79%

Shepparton

FOUNDATION	86.71%
GRADE 1	87.88%
GRADE 2	89.63%
GRADE 3	87.48%
GRADE 4	87.51%
GRADE 5	89.67%
GRADE 6	81.61%

Keysborough

FOUNDATION	88.21%
GRADE 1	87.65%
GRADE 2	90.04%
GRADE 3	90.89%
GRADE 4	88.39%
GRADE 5	89.06%
GRADE 6	90.79%

Ibrahim Dellal Sunshine

FOUNDATION	87.36%
GRADE 1	87.76%
GRADE 2	89.64%
GRADE 3	90.20%
GRADE 4	91.51%
GRADE 5	89.91%
GRADE 6	90.52%

Non-attendance Process

Parents/guardians can contact the College why the student will not be attending. Our School Information System notifies all parents of students with unexplained absence with an SMS text message at 10:30 AM. If the parent does not respond by 12 noon, the campus secretary contacts them to get details.

RETENTION

92.35% of the students who were enrolled in Year 9 in 2021 has graduated from Year 12, Sirius College in 2023.



STAFF



Our teachers' average attendance rate for 2023 was 95.24%

Staff Retention by campus

EASTMEADOWS	85 %
DALLAS	92 %
IBRAHIM DELLAL SUNSHINE	91 %
KEYSBOROUGH	83 %
MEADOW FAIR	86 %
SHEPPARTON	76 %

Average 87 %

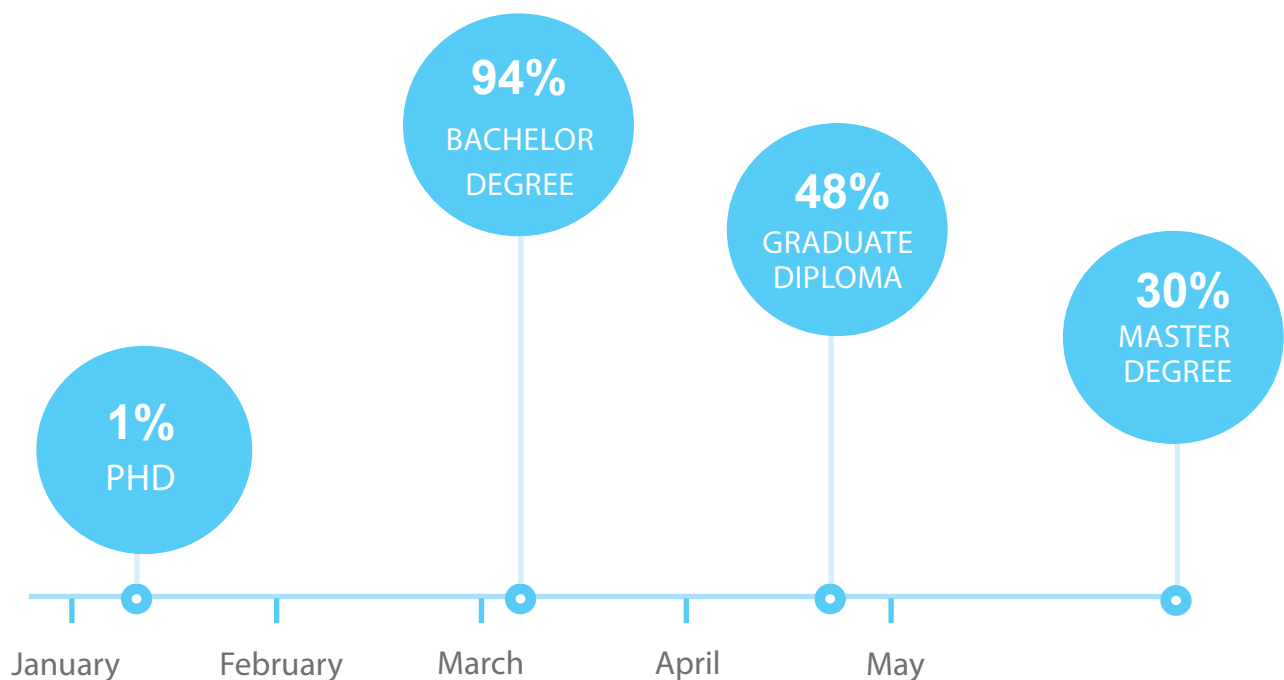
STAFF



2023 PD EXPENSES

Campus Name	Number of Teachers	PD Expenses	Average
Eastmeadows	55	\$ 96,105.13	\$ 1,744.19
Dallas	45	\$ 69,725.51	\$ 1,542.60
Ibrahim Dellal Sunshine	53	\$ 81,763.08	\$ 1,534.02
Keysborough	63	\$ 101,661.08	\$ 1,613.67
Meadow Fair	39	\$ 63,962.29	\$ 1,635.86
Shepparton	9	\$ 14,910.58	\$ 1,586.23
Total	265	\$ 428,127.68	\$ 1,614.97

TEACHERS QUALIFICATIONS FOR ALL CAMPUSES



SATISFACTION SURVEYS

PARENT SATISFACTION:

The following areas are the most satisfactory areas in our school for parents.

- 1- Overall, I am very satisfied with my decision to send my children to this school.
- 2- The school uses a broad range of communication types to keep parents informed.

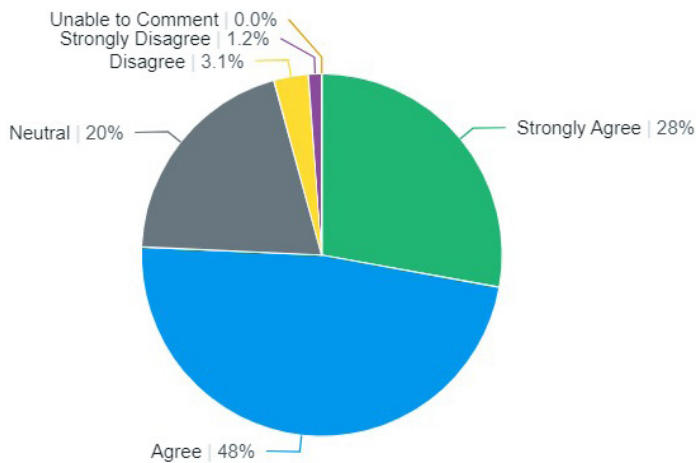


FIGURE 1

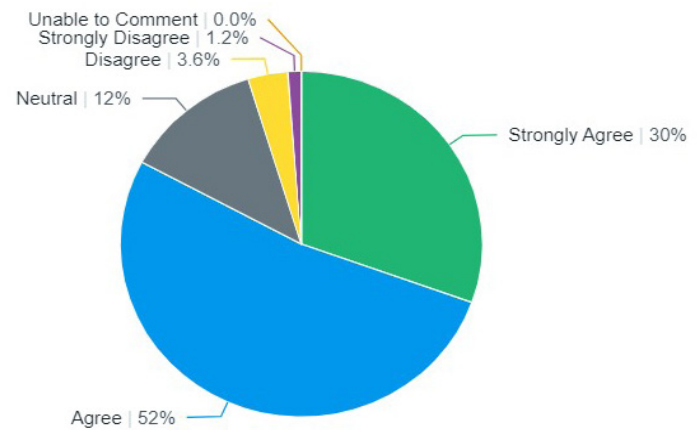


FIGURE 2

- 3- The school is a safe place in which to learn.
- 4- Students from different backgrounds and cultures are treated equally at this school.

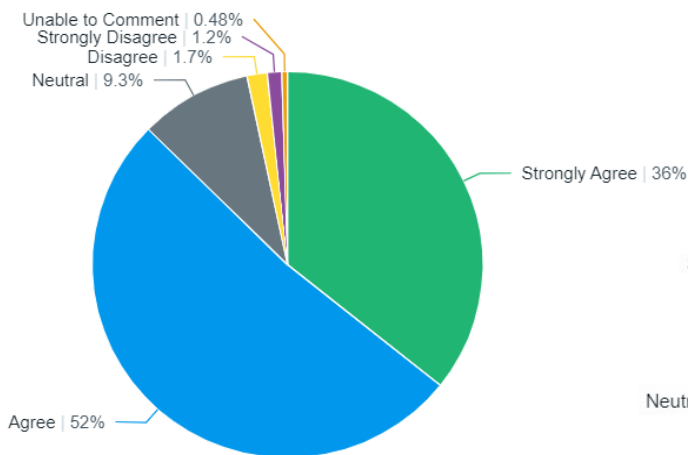


FIGURE 3

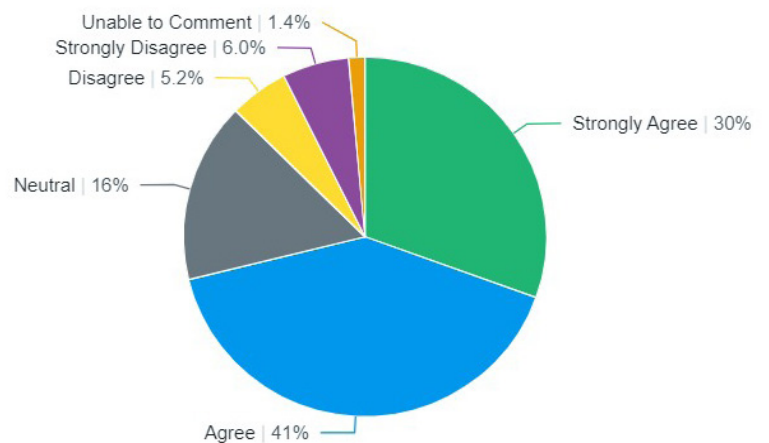


FIGURE 4

STUDENT SATISFACTION:

The following areas are the most satisfactory areas in our school for students.

1- My teachers are knowledgeable about the subjects they teach.

2- My school is a safe place in which to learn.

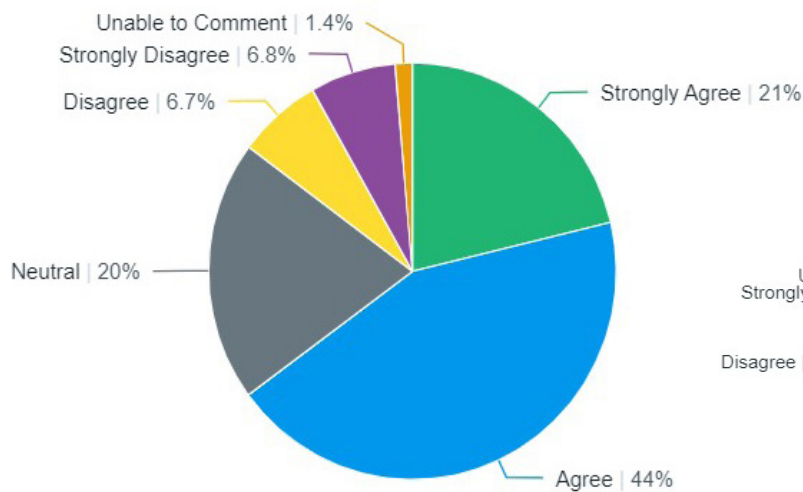


FIGURE 1

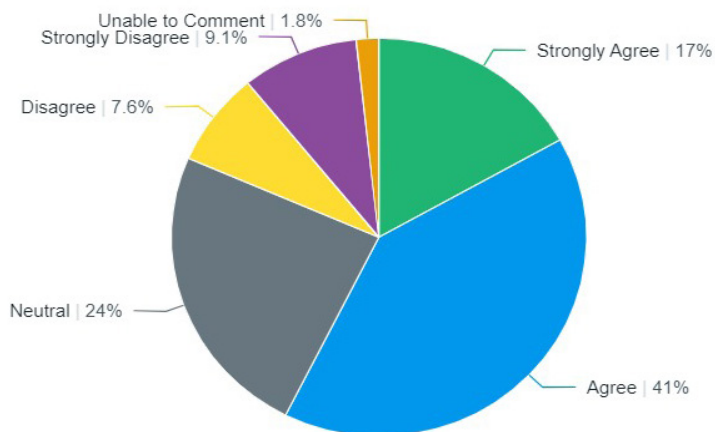


FIGURE 2

3- My teachers know and accept me.

4- My teachers expect high standards of learning from me.

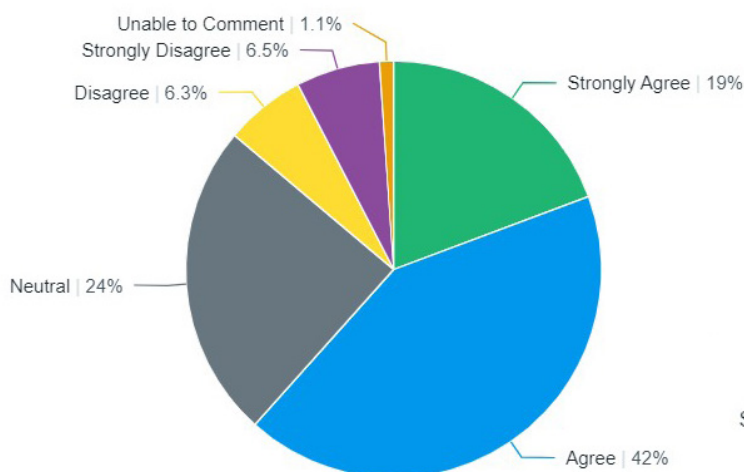


FIGURE 3

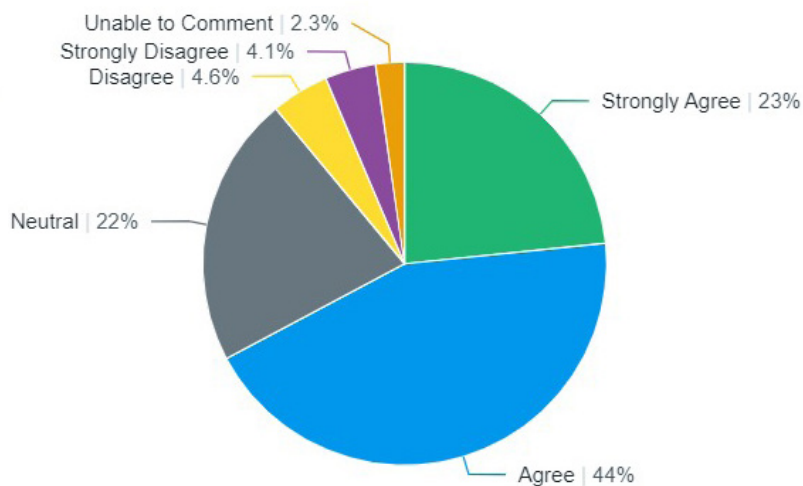


FIGURE 4

STAFF SATISFACTION:

The following areas are the most satisfactory areas in our school for staff.

- 1- I am proud to work at this school.
- 2- I am happy to recommend the school to people.

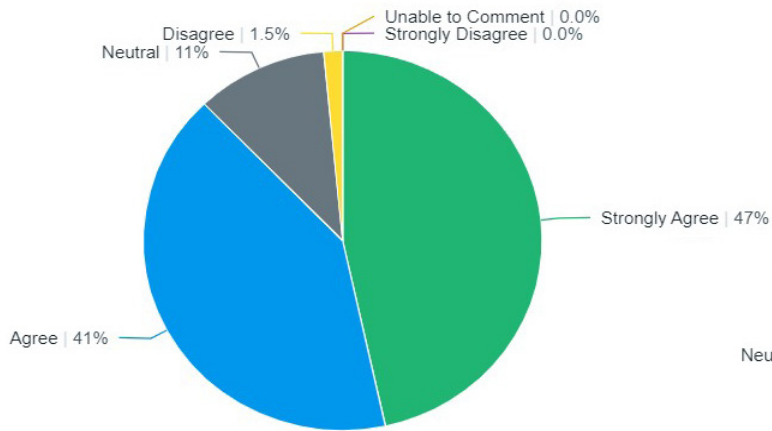


FIGURE 1

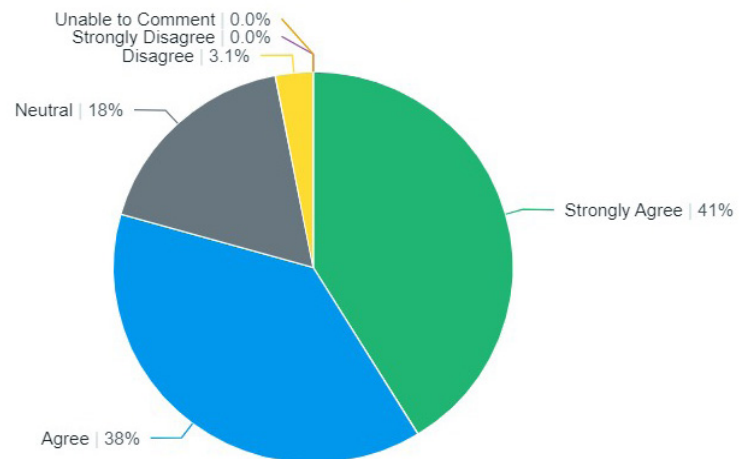


FIGURE 2

3- Administrators, teachers and other staff treat each other with respect.

4- Students have positive relationships with staff.

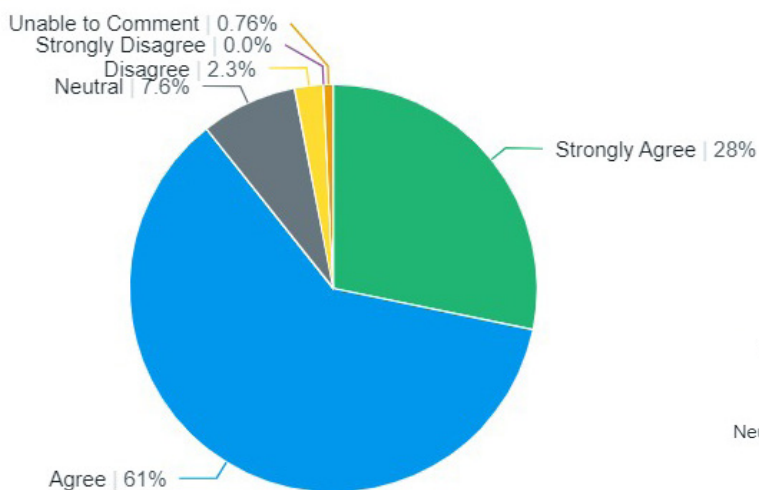


FIGURE 3

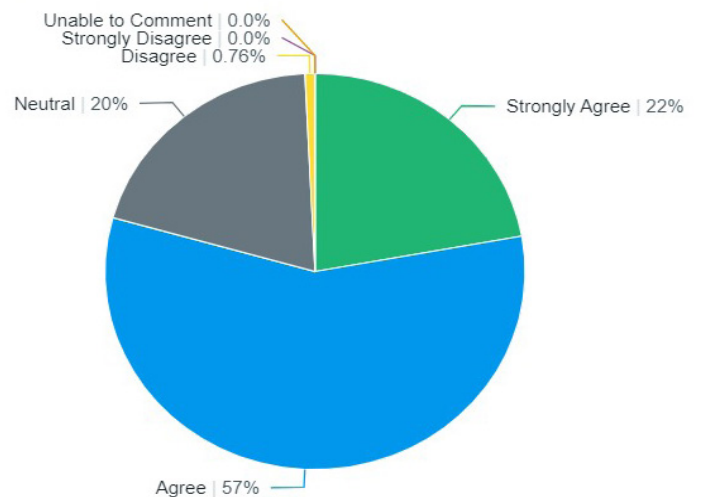
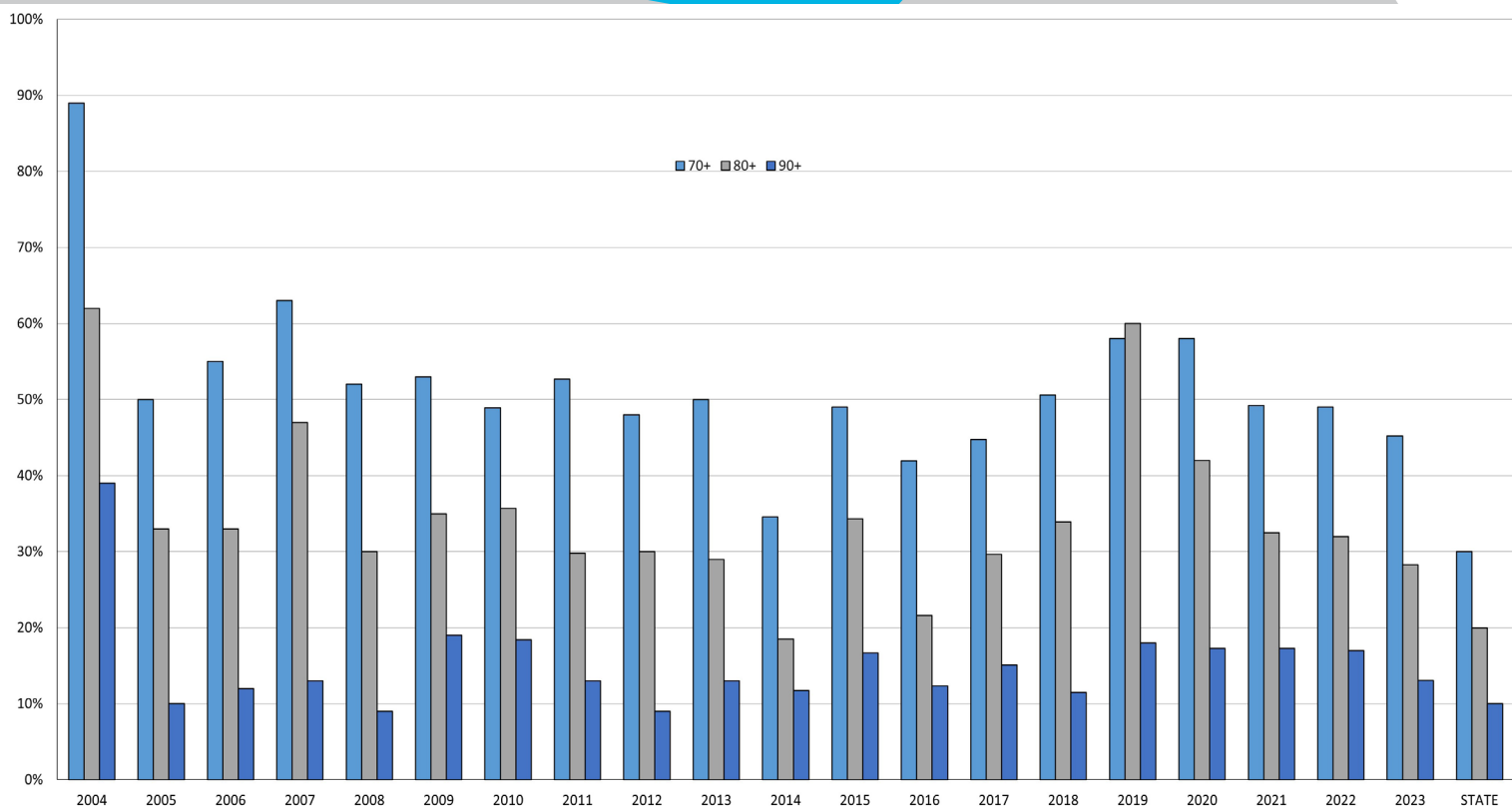


FIGURE 4

ATAR Scores

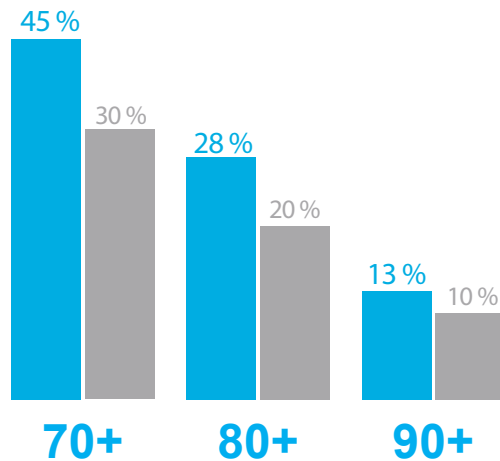
Comparing Sirius College graduates' ATAR scores to State



SIRIUS COLLEGE 2023 DESTINATION DATA

■ SIRIUS COLLEGE

■ STATE



Comparing Sirius College
2023 graduates' ATAR
scores with the State

TERTIARY ENROLMENTS

Summary Table of the Tertiary Enrolments of Sirius College for 2023

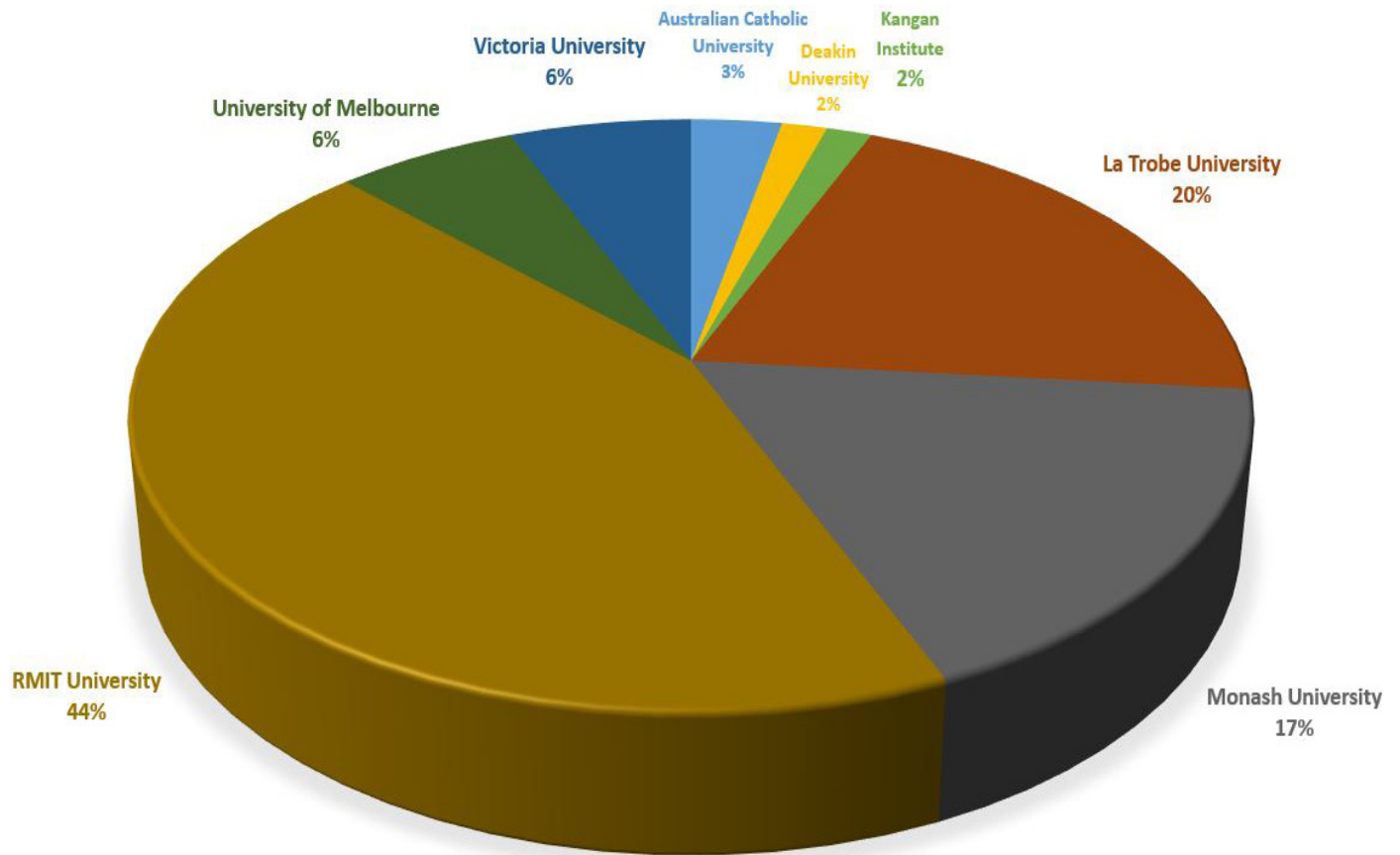
	University	Tafe	No Offers	Unknown	Total
EASTMEADOWS GRADUATES	87	0	2	0	89
EASTMEADOWS (%)	97.75%	0.0%	2.25%	0.0%	100%
KEYSBOROUGH GRADUATES	37	0	1	0	38
KEYSBOROUGH (%)	97.37%	0.0%	2.63%	0.0%	100%
MEADOW FAIR GRADUATES	64	0	0	0	64
MEADOW FAIR (%)	100%	0.0%	0.0%	0.0%	100%
IBRAHIM DELLAL SUNSHINE	33	0	0	0	33
IBRAHIM DELLAL GRADUATES (%)	100%	0.0%	0.0%	0.0%	100%
ALL SIRIUS COLLEGES	221	0	3	0	224
ALL SIRIUS COLLEGES (%)	98.66%	0.0%	1.34%	0.0%	100%

Tertiary Enrolment Distribution Table of Sirius Colleges for 2023

Tertiary Institution	MFC	EMC	IDC	KBC	All Sirius College	MFC %	EMC %	IDC%	KBC %	All Sirius College %
RMIT University	28	21	8	10	67	43.75%	23.60%	24.24%	26.32%	29.91%
The University of Melbourne	4	14	7	1	26	6.25%	15.73%	21.21%	2.63%	11.61%
La Trobe University	13	24	9	1	47	20.31%	26.97%	27.27%	2.63%	20.98%
Monash University	11	8	5	8	32	17.19%	8.99%	15.15%	21.05%	14.29%
Victoria University	4	8	4	2	18	6.25%	8.99%	12.12%	5.26%	8.04%
Deakin University	1	5	0	8	14	1.56%	5.62%	0.00%	21.05%	6.25%
Swinburne University of Technology	0	1	0	4	5	0.00%	1.12%	0.00%	10.53%	2.23%
Australian Catholic University	2	5	0	1	8	3.13%	5.62%	0.00%	2.63%	3.57%
Federation University	0	0	0	1	1	0.00%	0.00%	0.00%	2.63%	0.45%
Deakin College	0	0	0	1	1	0.00%	0.00%	0.00%	2.63%	0.45%
La Trobe College	0	1	0	0	1	0.00%	1.12%	0.00%	0.00%	0.45%
CQ University	0	0	0	0	0	0.00%	0.00%	0.00%	0.00%	0.00%
Kangan Institute	1	0	0	0	1	1.56%	0.00%	0.00%	0.00%	0.45%
No Offer	0	2	0	1	3	0.00%	2.25%	0.00%	2.63%	1.34%
TOTAL	64	89	33	38	224	100%	100%	100%	100%	100%



MEADOW FAIR CAMPUS TERTIARY ENROLMENT DISTRIBUTION

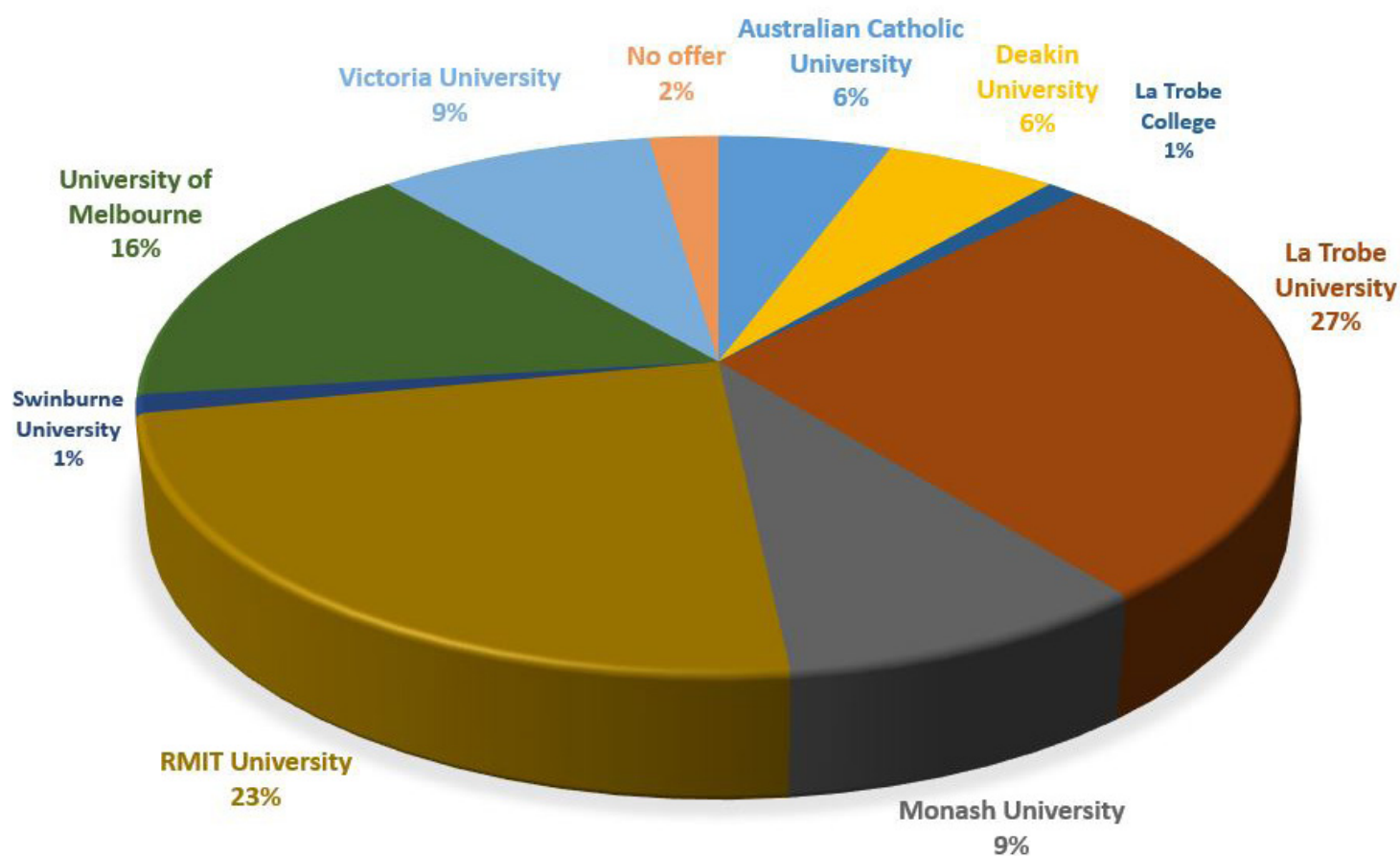


MEADOW FAIR

Meadow Fair Campus Tertiary
Enrolment Distribution (%)

University Name	%	Number of students
RMIT University	43.75%	28
The University of Melbourne	6.25%	4
La Trobe University	20.31%	13
Monash University	17.19%	11
Victoria University	6.25%	4
Deakin University	1.56%	1
Swinburne University of Technology	0.00%	0
Australian Catholic University	3.13%	2
Kangan Institute	1.56%	1
CQ University	0.00%	0
No Offer	0.00%	0
TAFE	0.00%	0
TOTAL	100%	64

EASTMEADOWS CAMPUS TERTIARY ENROLMENT DISTRIBUTION

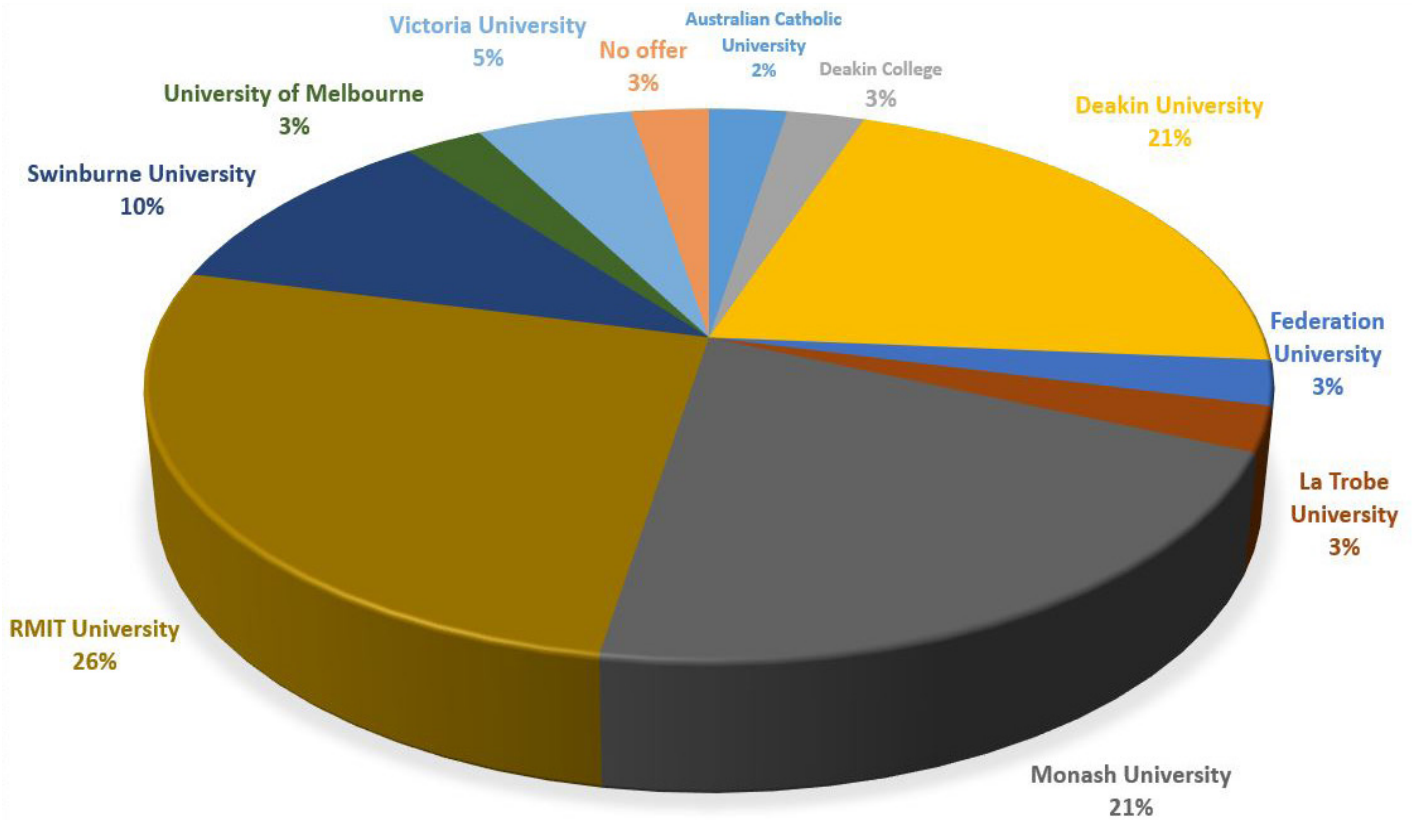


EASTMEADOWS

Eastmeadows Campus Tertiary
Enrolment Distribution (%)

University Name	%	Number of students
RMIT University	23.60%	21
The University of Melbourne	15.73%	14
La Trobe University	26.97%	24
Monash University	8.99%	8
Victoria University	8.99%	8
Deakin University	5.62%	5
Swinburne University of Technology	1.12%	1
Australian Catholic University	5.62%	5
Federation University	0.00%	0
La Trobe College	1.12%	1
CQ University	0.00%	0
No Offer	2.25%	2
TAFE	0.00%	0
TOTAL	100%	89

KEYSBOROUGH CAMPUS TERTIARY ENROLMENT DISTRIBUTION

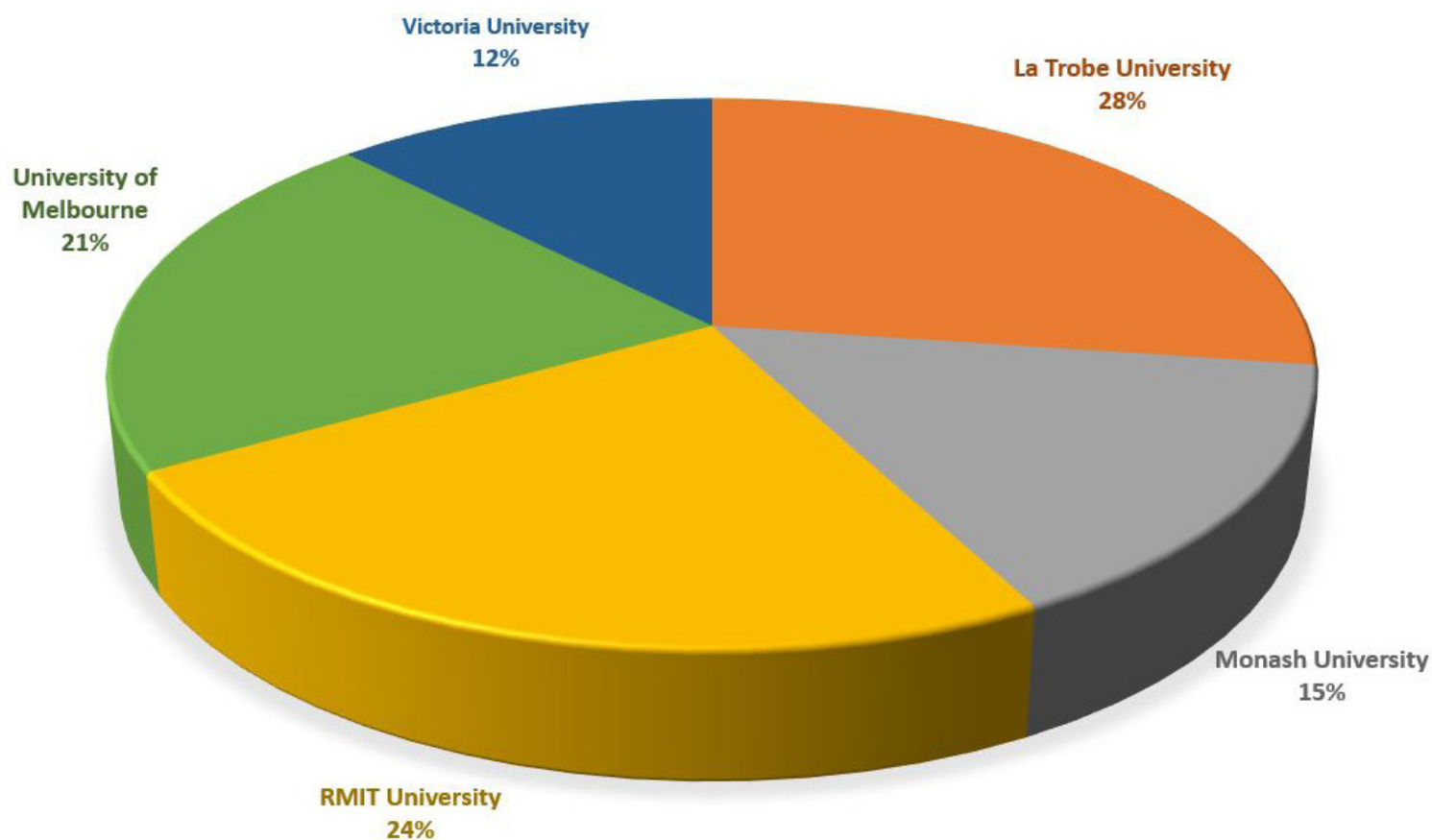


KEYSBOROUGH

Keysborough Campus Tertiary
Enrolment Distribution (%)

University Name	%	Number of students
RMIT University	26.32%	10
The University of Melbourne	2.63%	1
La Trobe University	2.63%	1
Monash University	21.05%	8
Victoria University	5.26%	2
Deakin University	21.05%	8
Swinburne University of Technology	10.53%	4
Australian Catholic University	2.63%	1
Federation University	2.63%	1
Deakin College	2.63%	1
CQ University	0.00%	0
No Offer	2.63%	1
TAFE	0.00%	0
TOTAL	100%	38

IBRAHIM DELLAL SUNSHINE CAMPUS TERTIARY ENROLMENT DISTRIBUTION



IBRAHIM DELLAL SUNSHINE

Ibrahim Dellal Sunshine Campus
Tertiary Enrolment Distribution (%)

University Name	%	Number of students
RMIT University	24.24%	8
The University of Melbourne	21.21%	7
La Trobe University	27.27%	9
Monash University	15.15%	5
Victoria University	12.12%	4
Deakin University	0.00%	0
Swinburne University of Technology	0.00%	0
Australian Catholic University	0.00%	0
Federation University	0.00%	0
Deakin College	0.00%	0
CQ University	0.00%	0
No Offer	0.00%	0
TAFE	0.00%	0
TOTAL	100%	33

FINANCIAL INFORMATION

INCOME

%

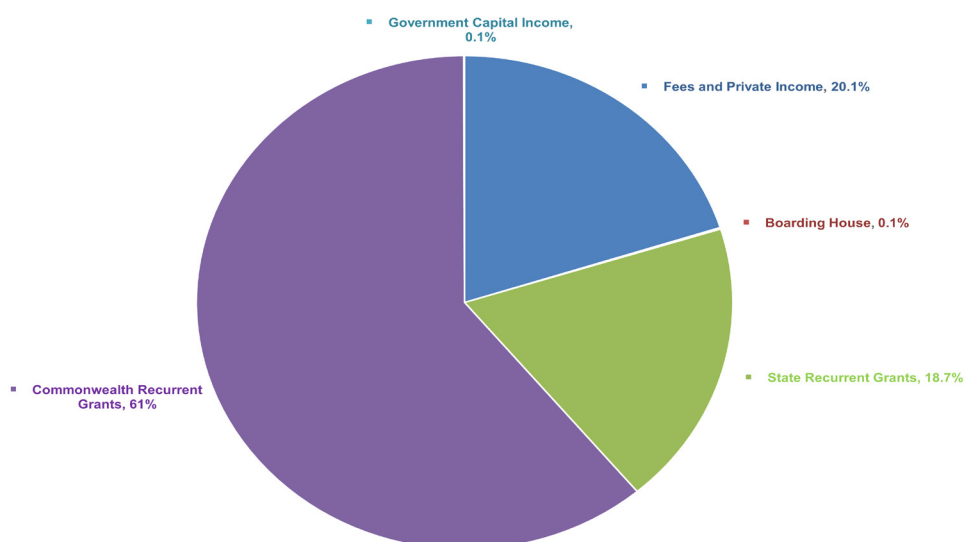
Fees & Private Income	20.1%
Boarding House	0.1%
State Recurrent Grants	18.7%
Commonwealth Recurrent Grants	61%
Government Capital Income	0.1%
Total	100 %

EXPENSES

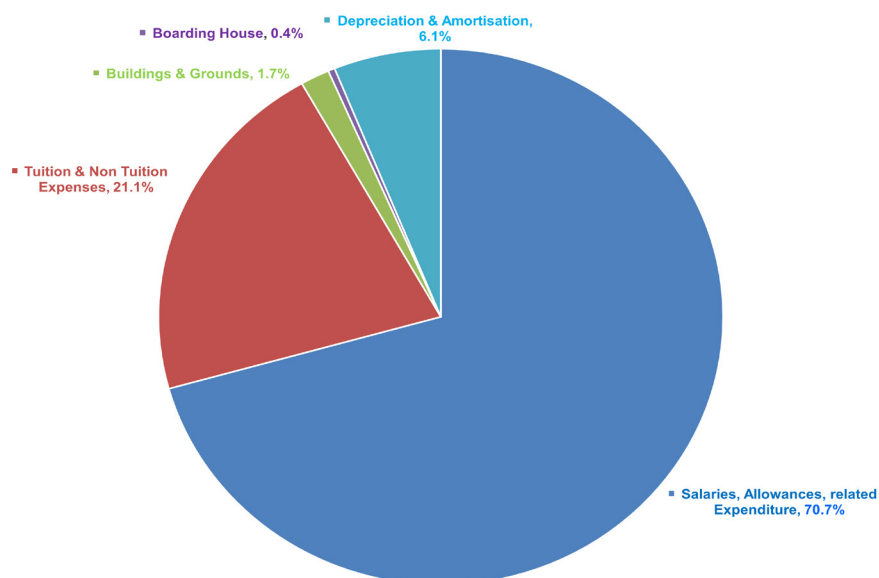
%

Salaries, Allowances, Related Expenditure	70.7%
Non Salary Expenses	21.1%
Buildings & Grounds	1.7%
Boarding House	0.4%
Depreciation & Amortisation	6.1%
Total	100 %

RECURRENT/CAPITAL INCOME



RECURRENT/CAPITAL EXPENDITURE



2023 Annual Report

